

ATM Raminator®

As criminals become more creative, new methods and tools must be used to protect people and assets. Using technology that hinders ATM removal by brute force, ATM Raminator gives the advantage back to you! This very same technology will provide protection for safes and other security containers. (Ask your ATM Raminator dealer for details.)

Typical ATM anchoring bolts fail due to the attack energy forces shattering the base concrete. The ATM Raminator product line is designed to absorb and redirect any "attacking force" using its technology*. Expecting an easy heist, thieves get confused. They leave the site realizing the ATM cannot be quickly dislodged.

In days past, the theft of an ATM was relatively simple. Chain pull-out, prying, and vehicle attacks, to name a few, can net a large reward in seconds. No more!

Easily enhance your ATM security now!

ATM Raminator...

... we anchor your assets!

*US Pat Application No 12/281791 and Patent File PCT/AU2007/000291
ATM Raminator is a registered trademark of Lockit Systems (Aust) Pty Ltd.

For More Information Please Contact:

214.349.0480 • 888.451.4646 • 214.349.9429 (Fax)
sales@securitytexas.com • www.securitytexas.com

SCI-ATM 07.09 (3K)

10750 Forest Lane
Dallas, Texas 75243

Security

Center

U.S.A. Distributor



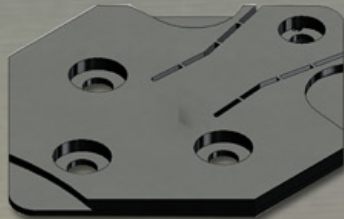
Fighting felons with physics...

***Anchoring technology products
for ATMs and safes***

**MINI Plinth
Plinth
V3
V3 Universal
Raminator Lite**

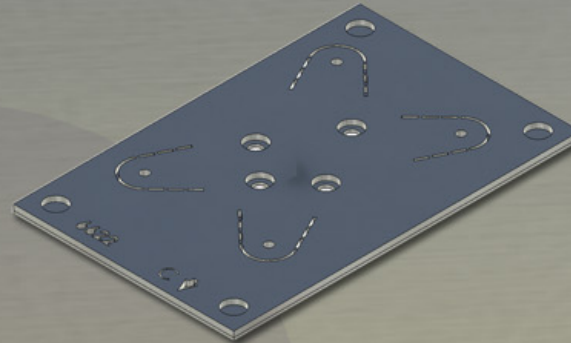
MINI Plinth

- Easily handled by one person
- Use multiple MINIs on larger ATMs
- Not model-specific to ATM
- Mounts under ATM
- Approx. size: 7/8"D x 11 1/2"W x 16"L
- Approx. weight: 28lbs.



Plinth

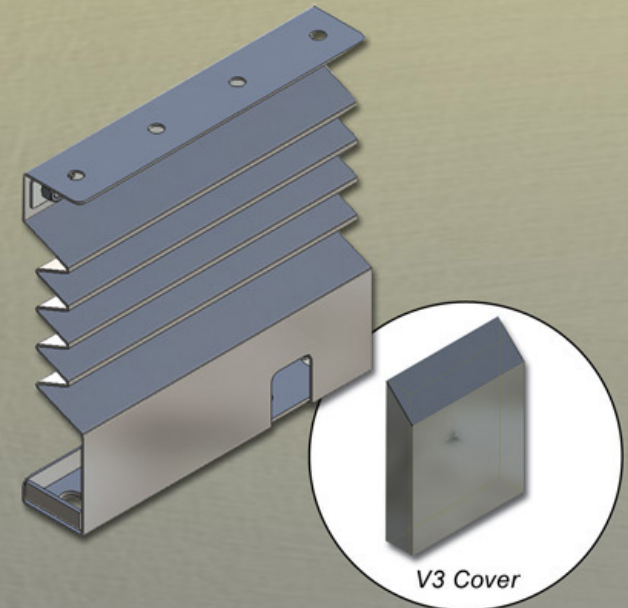
- ATM model-specific
- Mounts under the ATM
- Width and length varies by ATM model
- Approx. depth: 7/8"
- Weight can exceed 120lbs. depending on ATM model



Products shown in this brochure are not to scale.

V3 and V3 Universal

- Can be used on lobby, dispense-only, or larger full service ATMs
- Mounts on either sides or back of ATM
- Optional cover blends into ATM housing
- V3 Universal used when electronic circuitry is mounted high inside of ATM
- Approx. size: 4 1/4"D x 17 1/2"W x 21"L
- Approx. weight: 40lbs., Cover: 8lbs.



Fighting Felons with Physics

ATM Raminator Features



Successful test of a V3

- Easy to install, proven, effective system
- No electronics involved, totally hands-off protection
- Designed to slow-down and/or prevent removal by brute force
- May be installed during new installation or to existing ATMs
- May be used on safes or other security containers
- No on-going maintenance required
- Reusable
- Recyclable

**Endorsed by Leading Banking Associations
Throughout the U.S.A.**

Raminator Lite

- Latest ATM Raminator product release
- Designed for lighter bodied ATMs
- Suits most lobby ATMs
- May be mounted to the floor or wall
- No floor drilling with wall-mount
- Approx. size: 2"D x 15 1/8"W x 13 5/8"L
- Approx. weight: 25lbs.