

ADDING
INTELLIGENCE TO
SURVEILLANCE
TECHNOLOGY

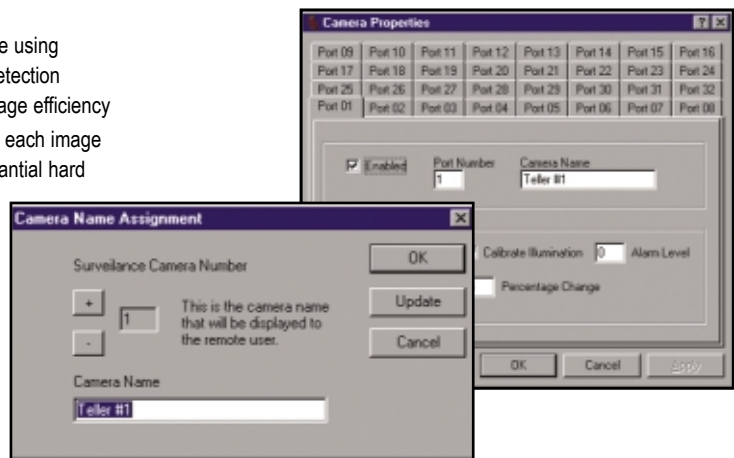
IRIS® Server is the software management system for the IRIS Digital Video System (DVS), the heart of its video capture, storage and playback capabilities. In combination with the appropriate IRIS DVS hardware, it records video images as digital computer files, eliminating the need for conventional videotape equipment, thereby producing substantial savings in labor, maintenance, inventory and opportunity costs. Digital images can also be retrieved much faster, saving investigation review time.

Key Features

- > Unique to IRIS
 - Network software to allow multiple users to view images simultaneously
 - Automated ATM light monitoring with up to four designated cameras for compliance built into the system
 - Interactive site map with camera locations and naming options to guide remote viewers with on-site floor plan and field of vision for each camera
 - Access with user names and proprietary communication software
 - Unique hardware lock on the software
- > Variable compression ratios
- > Stores all images, manages data and video controllers
- > Integrates transaction system data
- > Isolated from network maintenance commands
- > Maintains two logs
 - Service log of all activity for system diagnostics
 - 30 day running log of user access

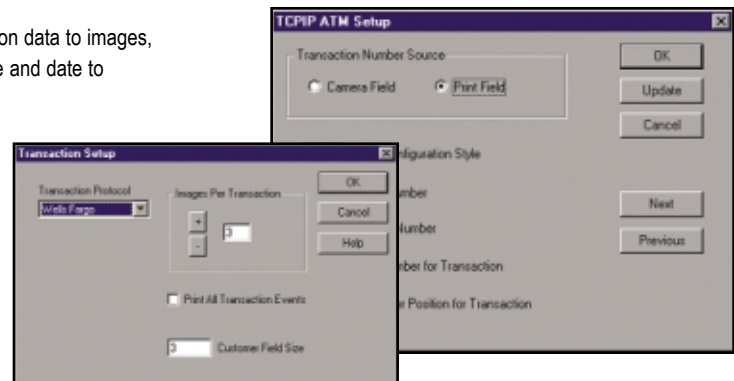
Surveillance Features

- > Unique to IRIS
 - Patented memory management software using "through the lens" customized motion detection process that significantly increases storage efficiency
 - Edits saved video images and analyzes each image on a frame by frame basis saving substantial hard disk drive space
- > Image quality and clarity exceed current and proposed law enforcement recommended standards
- > User defined surveillance parameters
- > More efficient image downloads
- > Stores a minimum of 30 days of all surveillance images



Transaction Features

- > Unique to IRIS
 - Patented index system relates transaction data to images, expanding the ability to link beyond time and date to transaction data
 - Captures transaction related images just prior to transaction finalization
- > Captures transaction data from multiple sources defined by user



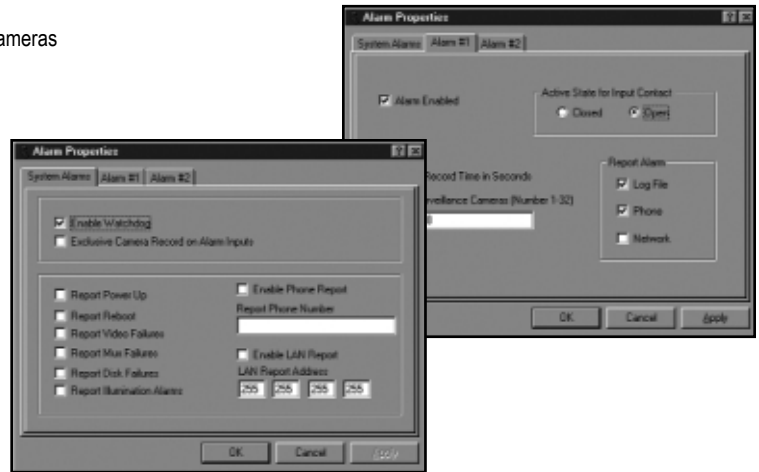
(continued on back)

Transaction Features (continued)

- > Integrates with multiple transaction sources, including
 - ATM
 - Network connection
 - Teller printers
 - Point of sale systems
 - Cash registers
 - Credit card transactions
 - RS-232, RS-422, data outputs
 - TCP/IP, Token Ring
 - Other custom transaction systems
- > Parses data to identify and separate transaction data from other communication
- > Stores a minimum of 120 days of transaction based images

Event Recording Features

- > User defined at set up
 - Allows user to select up to four individual cameras for high-speed recording
 - Allows user to select multiple recording modes such as time, date, motion detection, cameras or designated area
- > Automated alarm notification to IRIS Service Manager software or Central Station
- > Alarm inputs allow connection to
 - Alarms
 - Access control
 - Motion detectors
 - Door contacts
 - Panic buttons
- > Stores a minimum of 30 days of event images



On-site and Remote Access Software Features*

	On-Site	Remote
Live View	✓	✓
Play Back	✓	✓

- > Network version allows multiple users simultaneous access
- * Without changes to standard parameters for capturing and storing images

Programming Features

- > All programming may be done on-site or remotely
- > Easy-to-use interactive screens utilized to program all functions
- > No laptop required for programming or service
- > Monitors for system inactivity and performs auto start
- > Reports problems to IRIS Service Manager
 - Bad camera
 - Recording problem
 - System auto reset
 - Memory error
 - Disk problems
 - Power loss/recovery
 - Motion alarm
 - Attempted unauthorized access
 - ATM lighting low